



BT-301 Battery Condition Analyzer

---Internal resistance and conductance switchable

The BT-301 Battery Tester is very effective and economical battery management device for testing battery internal resistance (or conductance) and voltage. It helps you eliminate weak batteries to ensure performance of your battery systems.

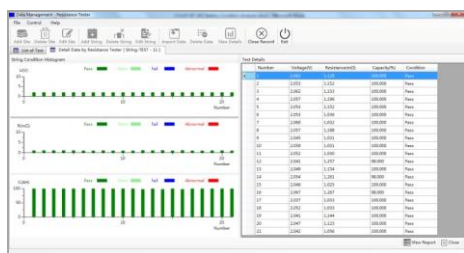
It is capable for accurate measurement of Valve Regulated Lead Acid (VRLA), Vented Lead Acid (VLA) batteries and Ni-cd batteries which are the main composition of standby critical power systems. This battery tester is widely applied for service providers, operations and maintenance teams for battery management and measurement to ensure power integrity in telecom networks, data center, power utility, forklift maintenance and so on.

Unique Advantages

- ◆ Multilingual: English, Spanish, Germany, French and more to come
- ◆ Two units in one, smart switch to test internal resistance and conductance of battery.
- ◆ Including rugged test clamp and 2-section pin probe for different battery conditions
- ◆ Wide test range up to 6000Ah for Lead-Acid or Nickel-Cadmium single battery up to 16V
- ◆ Field proven accurate and repeatable measurement to identify battery health.
- ◆ Very fast and consistent test of battery or multiple batteries simply in several seconds
- ◆ It adopts advanced measurement way of AC signal discharge to test internal resistance
- ◆ User friendly TFT touch screen and keypad as alternative operation
- ◆ Universal micro-USB for firmware update, data export and battery charging
- ◆ Functional management software on PC for recording, analyzing measurement data and easy report printing out.
- ◆ Battery pack is durable in the field with testing time of 8-12 hours
- ◆ Up to 100,000 cells stored internally, unlimited with USB drive exportation

Functional PC Software

Kongter Data View software provides smart solutions for data analysis, battery condition tracking and report generation in Excel. This PC software is also expandable for battery management along with Kongter's other battery test equipment including load bank, battery data logger, battery charger and so on. It is functional and powerful for complete data trending and analysis of your batteries.



Functional PC software



Wide applications

Application:

- Telecom & communication power
- Uninterrupted Power Supplies (UPS)
- Utility transmission and distribution systems
- Data center, healthcare, education or financial
- Forklift and traction battery maintenance
- Refinery, mining and offshore platform
- Battery manufacture and inspection



Packed in rugged carrying case

Technical Specification

Applications:	Test single Lead-Acid or Nickel-Cadmium cell or battery string (one by one after setting once). Cell types supported: 1.2V, 2V, 6V, 12V and other customized types up to 6000Ah.
Resistance range	Internal Resistance: 0.001 mΩ--100mΩ Conductance: 100 - 19,990 Siemens
Voltage range	0.000V ~25V
Test Data Storage:	100,000 cells stored internally, unlimited with USB drive exportation
Minimum test resolution - resistance -Voltage	0.001mΩ 1mV
Test accuracy -conductance -voltage	Resistance/Conductance: 2% Voltage: 0.5%
User Programmable Functions:	<ul style="list-style-type: none"> • Customized battery types • Low voltage alarm setting • High resistance alarm setting • Test mode (push button/touch screen/auto start)
Cable Options:	<ul style="list-style-type: none"> • 2-section Pin probe • Alligator Test Clamp • Custom cables by quotation
Power supply	Li-ion battery (4000mAh), 8~12hours working time after full charge
Data Transfer:	USB via micro-USB cable
Storage Temperature:	-20~50°C
Operation environment	0°C to 40°C, 90% R.H
Over Voltage Protection:	<ul style="list-style-type: none"> • Auto-reset disconnect • Reverse polarity protected
Measuring cells per string	1≤cells≤254
LCD display	272*480 pixel, 4.3" TFT Touch Screen LCD
Housing Material:	Acid resistant ABS plastic santoprene overmold
Tester Dimensions:	L186*W98*H40 mm
Weight:	Main body: 0.45KG Package: 3Kg
Standard:	CE Marking, EMC standard



Standard composition:

- Main body
- 2-in-1 test clamp
- 2-section pin probe
- Carrying case
- Battery charger
- USB
- User manual



Hardware Features

Quick plug-in connector for testing clamp or pin probe on top of the main unit:



Universal micro-USB for firmware update, data exportation and internal battery charging.



Test clamp:

BT-301 includes one set of test clamp (2-in-1) for quick test of battery internal resistance and voltage.

This rugged clamp set has metal jaw of 6cm long and 3mm thick, small but strong enough to connect battery posts in most ways of battery connections. Inner jagged structure is also useful for removing oxide on battery post. This ensures makes measurement result

Pin Probe:

For quick test of batteries with contact surface as small as 3mm and 1.3mm (2 points) of battery posts.

The pin probe is composed of 2 sections which make it extendable to longer length for easy measurement of different battery wiring structures. Section 1 length is 23cm. With extension, length is 39cm.

Order Info:

BT-301P (Base Kit with pin probe)

BT-301T (Base Kit with testing clamp)

BT-301C (Complete Kit with both pin probe and testing clamp)